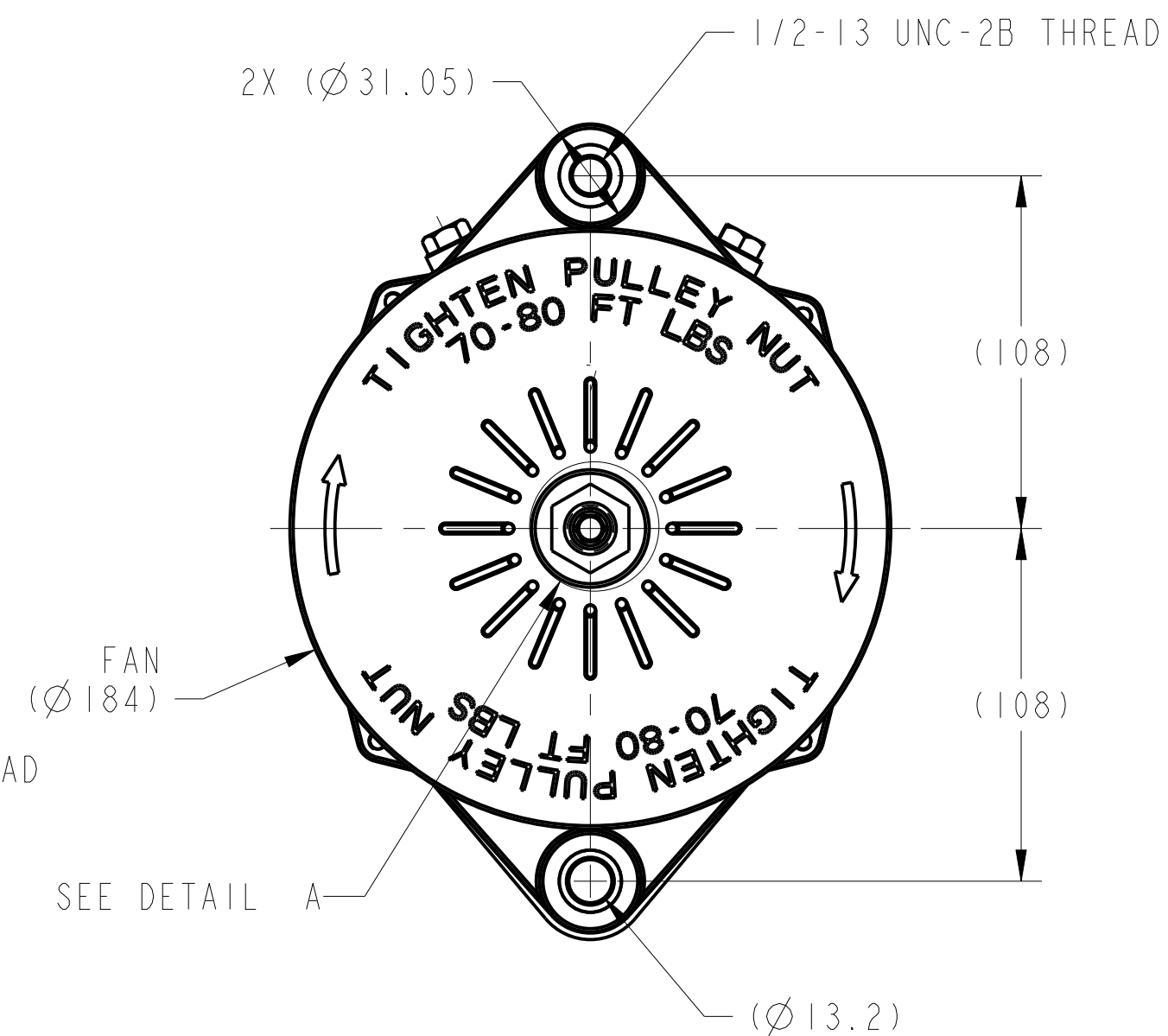
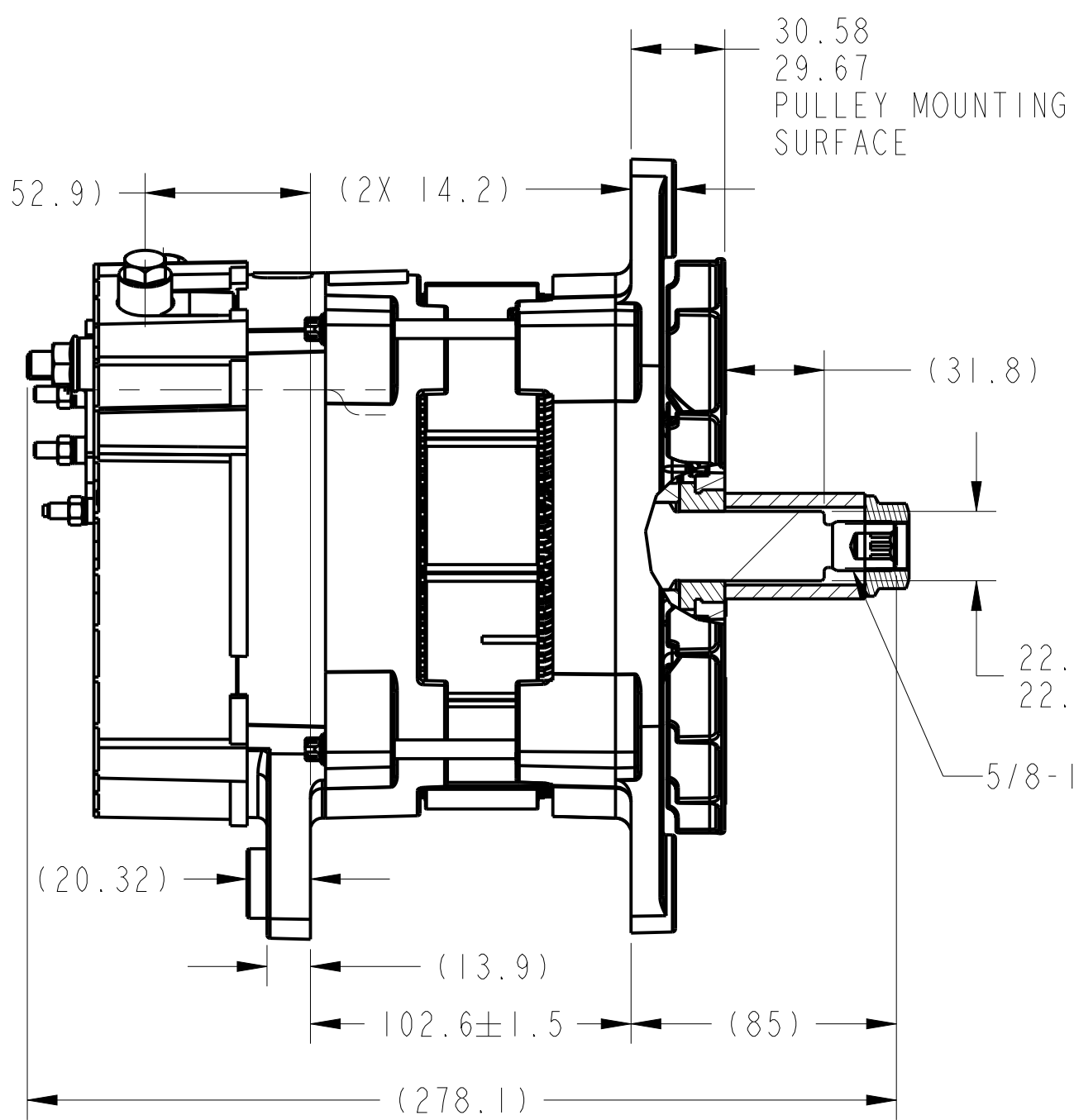
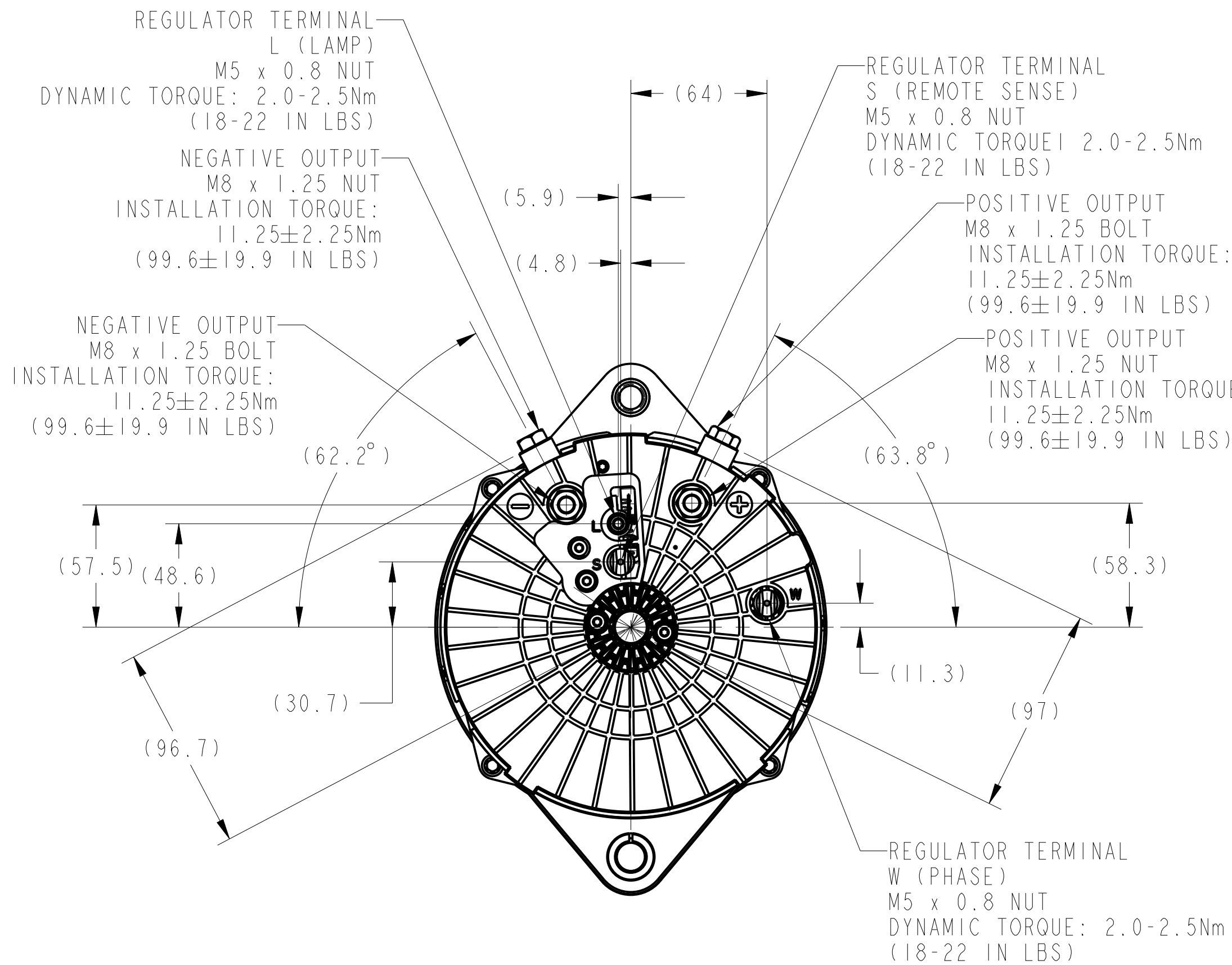
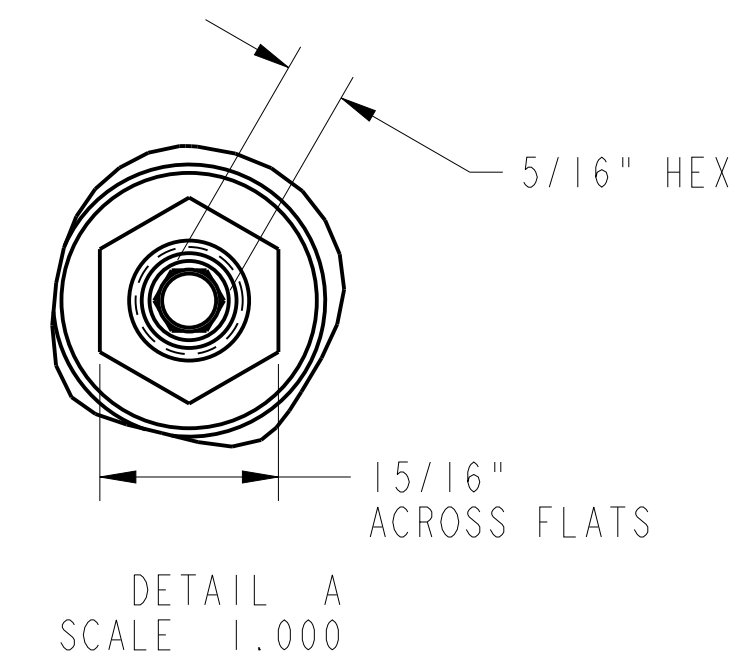
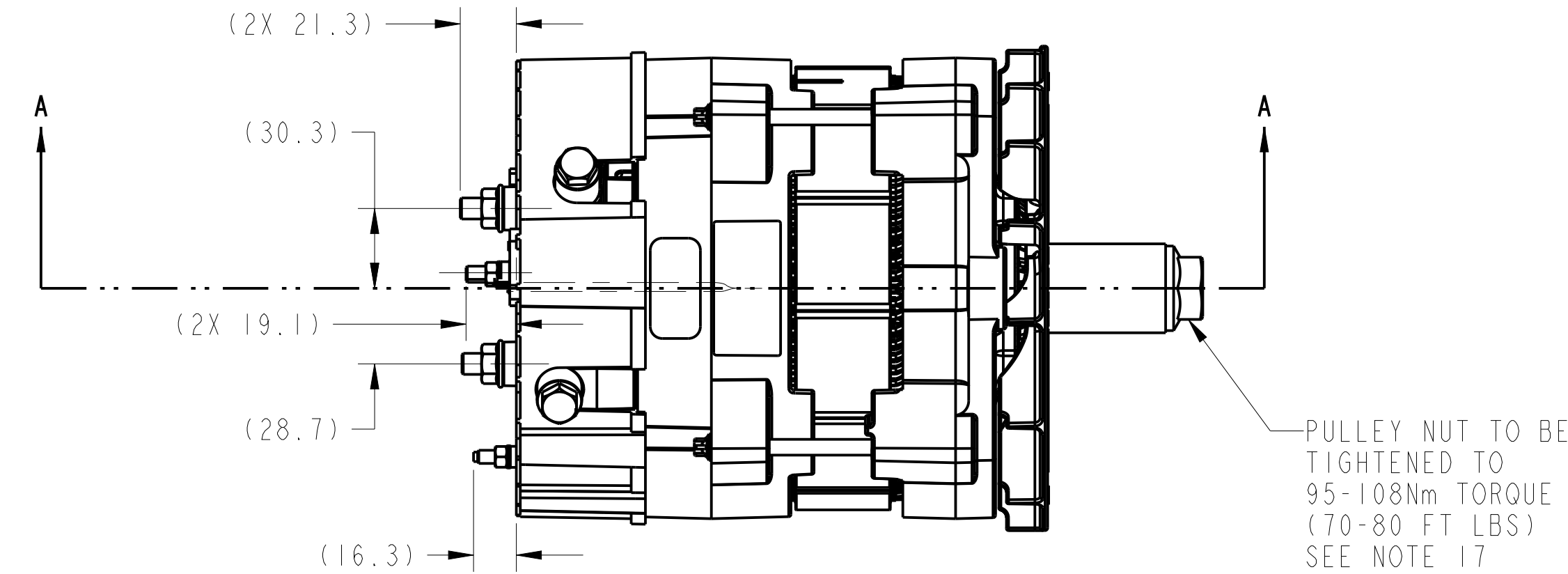
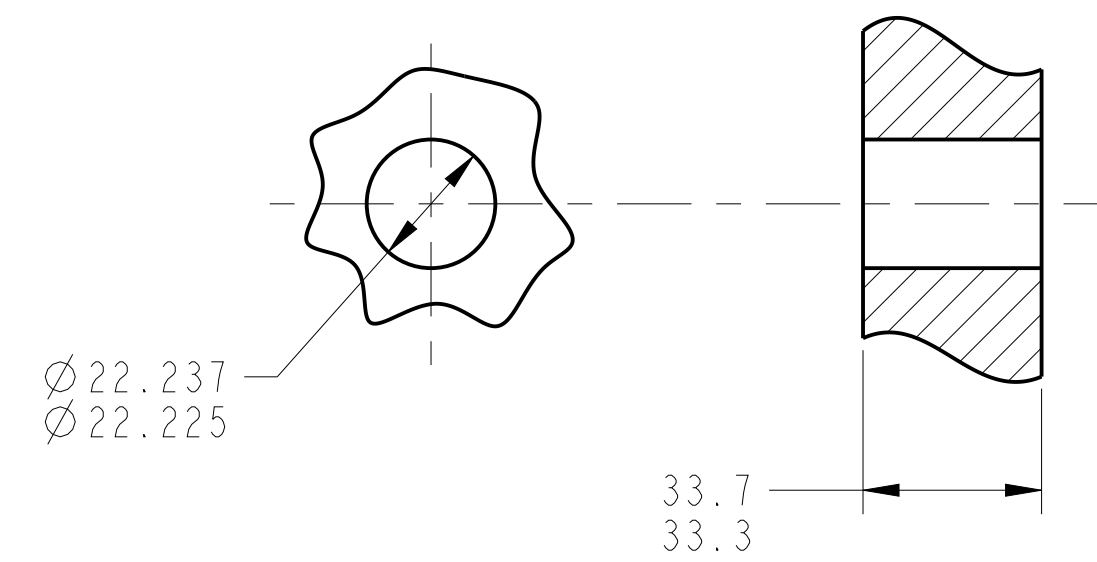


METRIC - mm [inch]

CRITICAL CHARACTERISTICS
 ◻ MANDATORY RANDOM INSPECTION
 ◊ SPC REQUIRED

ZONE		REV	DESCRIPTION	DATE	APPROVED
A		1	RELEASE FOR PRODUCTION	RJW 03/02/18	BDS ECN 62098

RECOMMENDED PULLEY HUB DETAIL
(NO SCALE)

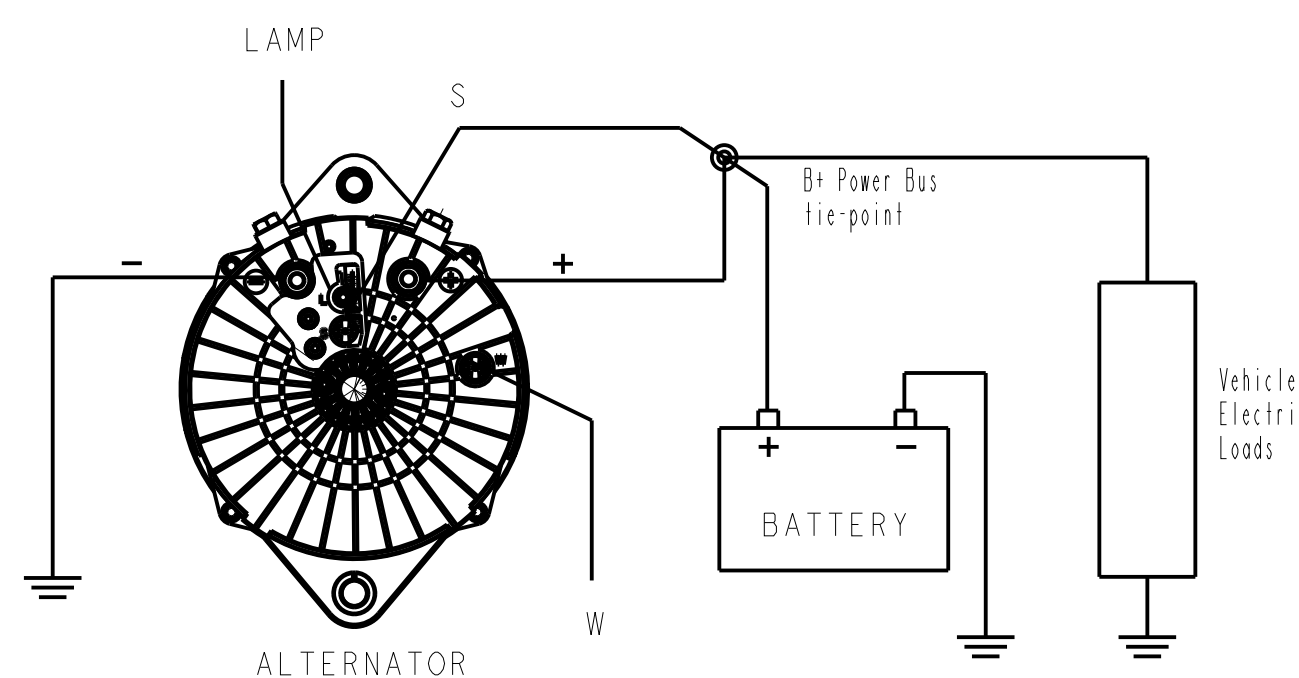


SECTION A-A

NOTES:

- SYSTEM VOLTAGE: 24 VOLTS
- RATED LOAD CURRENT: 250 AMPS
- OPERATIONAL TEMPERATURE RANGE: -40° TO 125° C (-40°F TO 257°F)
- REGULATOR TYPE: INTERNAL
- RPM RATED OUTPUT: 6000 RPM
- MAX CONT RPM: 8,000 RPM MAX
- INTERMITTENT RPM: 10,000 RPM 1% MAX DUTY CYCLE.
- ROTATION: CLOCKWISE DIRECTION WHEN VIEWED FROM THE FAN END OF UNIT
- GROUND: INSULATED
- MOUNTING ORIENTATION: SHAFT HORIZONTAL
- TORQUE PULLEY NUT TO 102 ± 7 Nm (75.2 ± 5.1 FT LBS) AFTER FITTING PULLEY
- MOUNTING BOLT TORQUE: 40Nm-47Nm (29.5-34.7 FT LBS) TORQUE SEQUENCE: FRONT HOLES ($\varnothing 10.7$) THEN REAR HOLES ($\varnothing 12.7$)
- PERFORMANCE CURVES: OUTPUT: C-3606-1
HORSEPOWER & TORQUE: C-3606-2
- MAX HUB LOAD 1000N AT 25mm (449.6 LBF AT 0.98") FROM BEARING FACE
- UNLESS OTHERWISE SPECIFIED, ALL DIMENSIONS ARE NOMINAL
- APPROXIMATE WEIGHT: 16.8 Kg (37.0 LBS)
- 5/16" HEX DRIVER MUST BE FULLY INSERTED DURING INSTALLATION OF THE NUT TO PREVENT SHAFT DAMAGE
- ROTOR INERTIA - 14400 Kgmm² (14.4x10⁻³ KgM²)
- REFER TO SPEC 5471063A01 FOR LABEL AND PRINTING INFORMATION.
- PAPER TUBE SPACER ITEM #6 INSTALLED FOR PROTECTION OF SHAFT AND ROTOR DURING SHIPPING. DO NOT SHIP WITHOUT EITHER TUBE OR PULLEY INSTALLED.
- NO STEEL WASHERS ALLOWED BETWEEN CABLES AND TERMINALS.
- DO NOT USE TERMINAL OUTPUT STUDS OR BOLTS AS A TERMINAL BLOCK OR JUNCTION FOR OTHER THAN ALTERNATOR OUTPUT LEADS.

TYPICAL APPLICATION



UNCONTROLLED COPY

BLD4102H	24	250	86A
MODEL	VOLTS	AMPS	FORMAT

THIS PRINT SUPERSEDES ALL PREVIOUS REVISIONS. IT IS CURRENT WHEN ISSUED BY PRESTOLITE ENGINEERING. IT IS THE USER'S RESPONSIBILITY TO CONFIRM THAT IT IS CURRENT AFTER THAT. INTERPRET DRAWING ACCORDING TO ANSI Y14.5M-1982. DO NOT SCALE - WORK TO DIMENSIONS. UNLESS OTHERWISE SPECIFIED, DIMENSIONAL TOLERANCES ARE:
 X±1, X.X±0.3, X.XX±0.15, ANGLES±0.5°
 © COPYRIGHT 2015 PRESTOLITE ELECTRIC, INCORPORATED. ALL RIGHTS RESERVED. DATA CONTAINED HEREIN IS PROPRIETARY TO PRESTOLITE ELECTRIC, INCORPORATED AND MAY NOT BE USED, RELEASED, DISCLOSED, REPRODUCED, MODIFIED, PERFORMED, OR DISPLAYED WITHOUT THE PRIOR WRITTEN APPROVAL OF PRESTOLITE ELECTRIC, INCORPORATED. UNITED STATES GOVERNMENT LICENSE RIGHTS ARE LIMITED TO THOSE MANDATORY RIGHTS IDENTIFIED IN DFARS 252.227-7015(c)

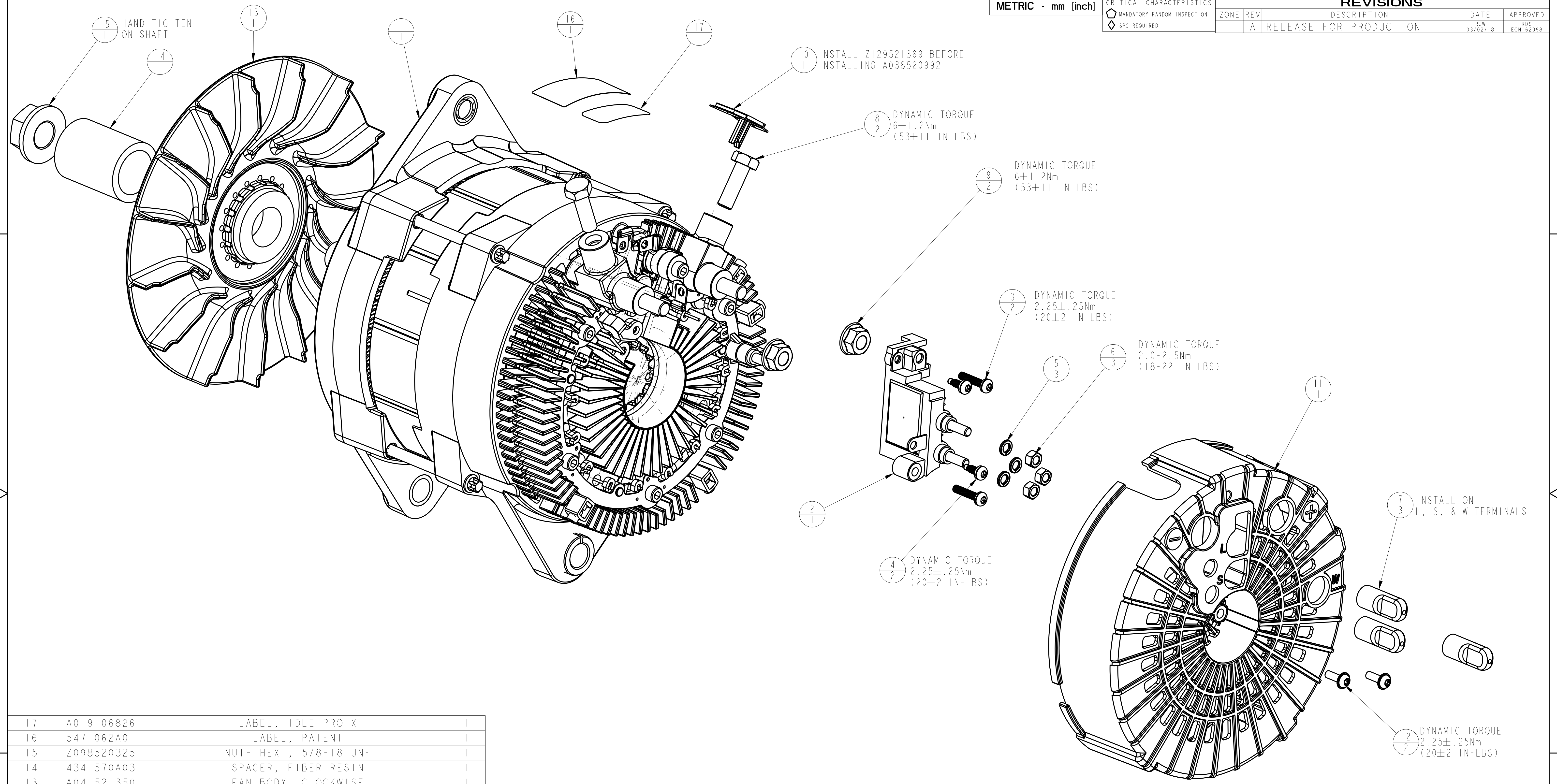
DRW/CHKD/ENG	RJW	DATE	03/03/15
	RDH	DATE	03/03/15
	JDP	DATE	03/03/15

PRESTOLITE ELECTRIC, INC. 400 MAIN STREET ARCADÉ, N.Y. 14009	
24V 250A BRUSHLESS OUTLINE	
SIZE	FSCM NO
ECN 62098	D OEDYI
EPN A2013-010	SCALE 0.500
DWG NO	BLD4102H
	SHEET 1 OF 2

METRIC - mm [inch]

CRITICAL CHARACTERISTICS
 ◊ MANDATORY RANDOM INSPECTION
 ◊ SPC REQUIRED

REVISIONS		DATE	APPROVED
ZONE	REV	DESCRIPTION	
A		RELEASE FOR PRODUCTION	RJW 03/02/18
			BDS ECN 62098



17	A019106826	LABEL, IDLE PRO X	1
16	5471062A01	LABEL, PATENT	1
15	Z098520325	NUT- HEX , 5/8-18 UNF	1
14	4341570A03	SPACER, FIBER RESIN	1
13	A041521350	FAN BODY, CLOCKWISE	1
12	Z106105035	SCREW, M4X12 FLANGED BUTTON HEAD INT TORX	2
11	A038520992	COVER	1
10	Z129521369	INSULATOR - SNAP IN	1
9	Z098105034	NUT, M8, HEX FLANGE	2
8	Z102521158	BOLT M8x1.25x25	2
7	A184521542	CAP	3
6	Z098104578	NUT, HEX M5 X 0.8	3
5	Z093036896	WASHER, LOCK , #10	3
4	Z164521532	SCREW, M4X8 SEMS TORX	2
3	Z164521531	SCREW, M4X20 SEMS TORX	2
2	R214521472	REGULATOR 24V ASSEMBLY	1
1	A200106587	STOCKUNIT 24V 250A	1
ITEM	PART NUMBER	DESCRIPTION	QTY

THIS PRINT SUPERSEDES ALL PREVIOUS REVISIONS. IT IS CURRENT WHEN ISSUED BY PRESTOLITE ENGINEERING. IT IS THE USER'S RESPONSIBILITY TO CONFIRM THAT IT IS CURRENT AFTER THAT. INTERPRET DRAWING ACCORDING TO ANSI Y14.5M-1982. DO NOT SCALE - WORK TO DIMENSIONS. UNLESS OTHERWISE SPECIFIED, DIMENSIONAL TOLERANCES ARE:
 X±1, X.X±0.3, X.XX±0.15, ANGLES±0.5°

© COPYRIGHT 2015 PRESTOLITE ELECTRIC, INCORPORATED. ALL RIGHTS RESERVED. DATA CONTAINED HEREIN IS PROPRIETARY TO PRESTOLITE ELECTRIC, INCORPORATED AND MAY NOT BE USED, RELEASED, DISCLOSED, REPRODUCED, MODIFIED, PERFORMED, OR DISPLAYED WITHOUT THE PRIOR WRITTEN APPROVAL OF PRESTOLITE ELECTRIC, INCORPORATED. UNITED STATES GOVERNMENT LICENSE RIGHTS ARE LIMITED TO THOSE MANDATORY RIGHTS IDENTIFIED IN DFARS 252.227-7015(c)

DRN (CHD) ENG	RJW	DATE	03/03/15
	RDH	DATE	03/03/15
	JDP	DATE	03/03/15
REVISE ONLY IN PRO/ENGINEER THIRD ANGLE PROJECTION			
ECN	62098	SCALE	1.000
EPN	A2013-010		

UNCONTROLLED COPY

PRESTOLITE ELECTRIC, INC.
 400 MAIN STREET
 ARCADE, N.Y. 14009

24V 250A BRUSHLESS OUTLINE

SIZE FSCM NO D OEDYI
 DWG NO BLD4102H
 SCALE 1.000 SHEET 2 OF 2

RELEASE LEVEL A-Arc