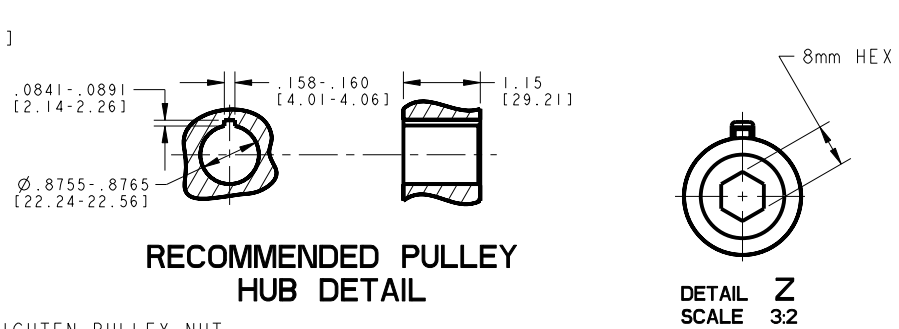
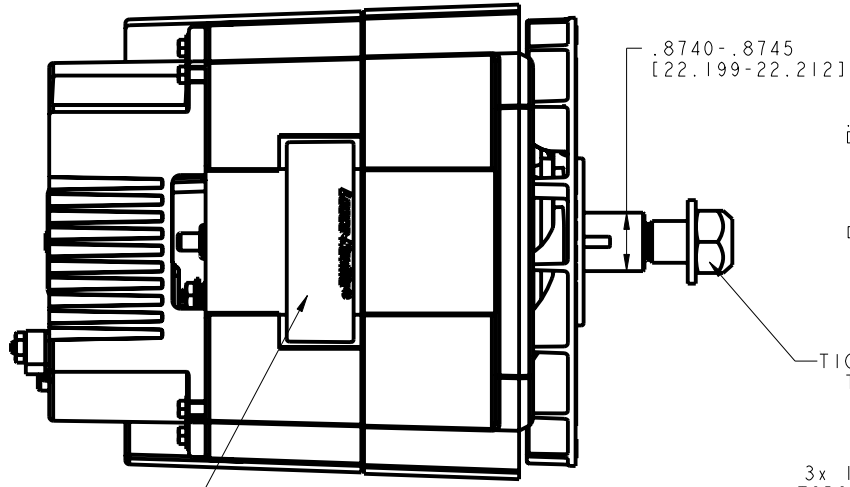


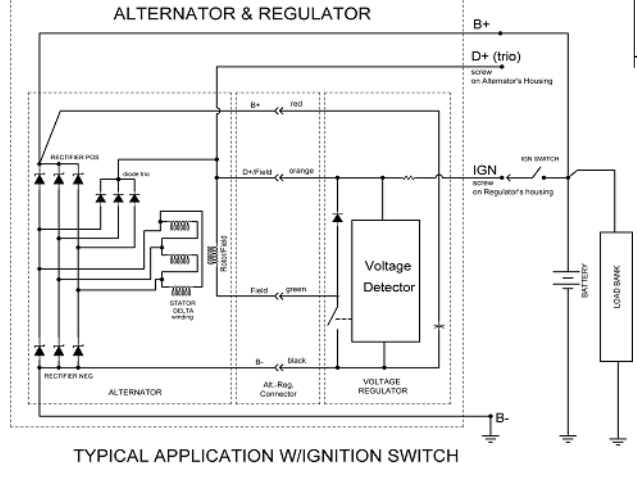
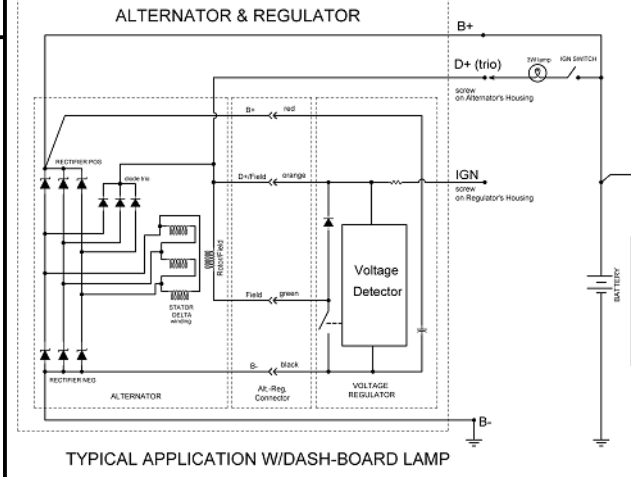
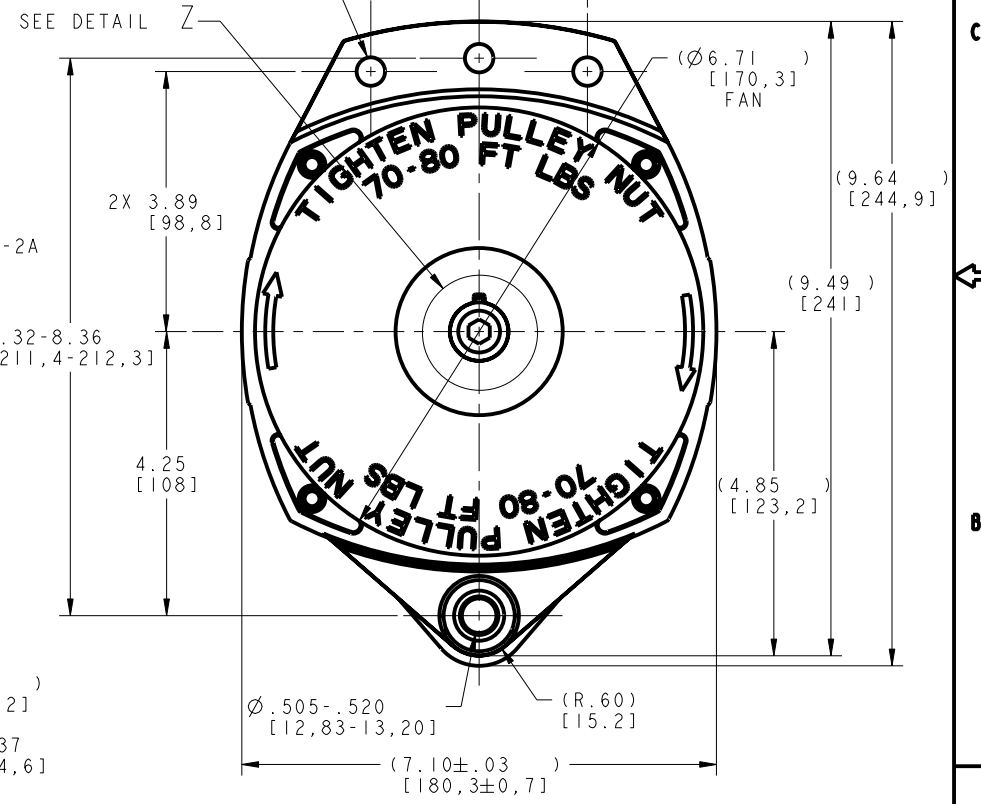
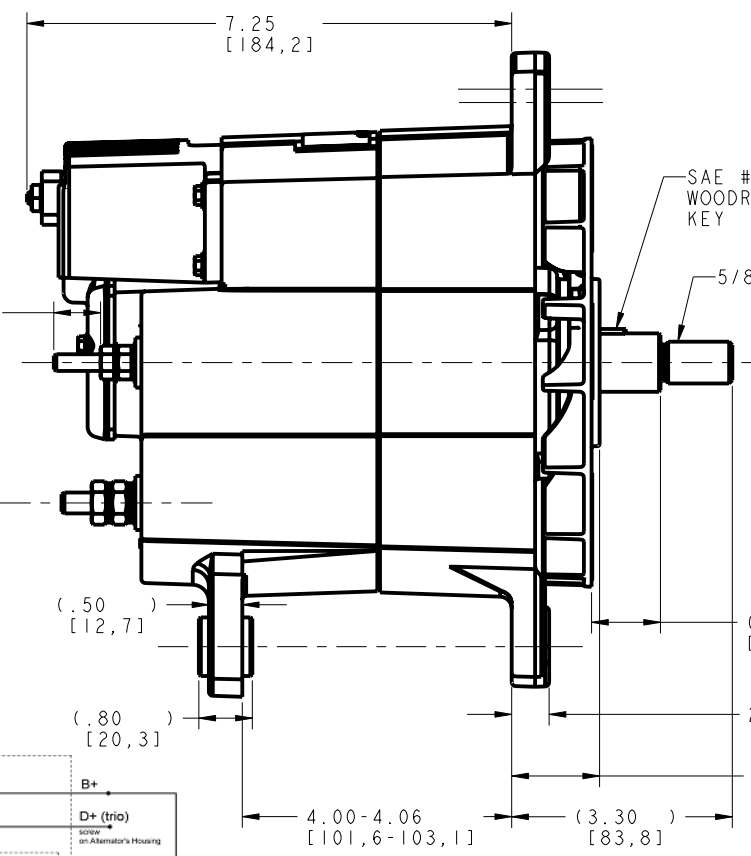
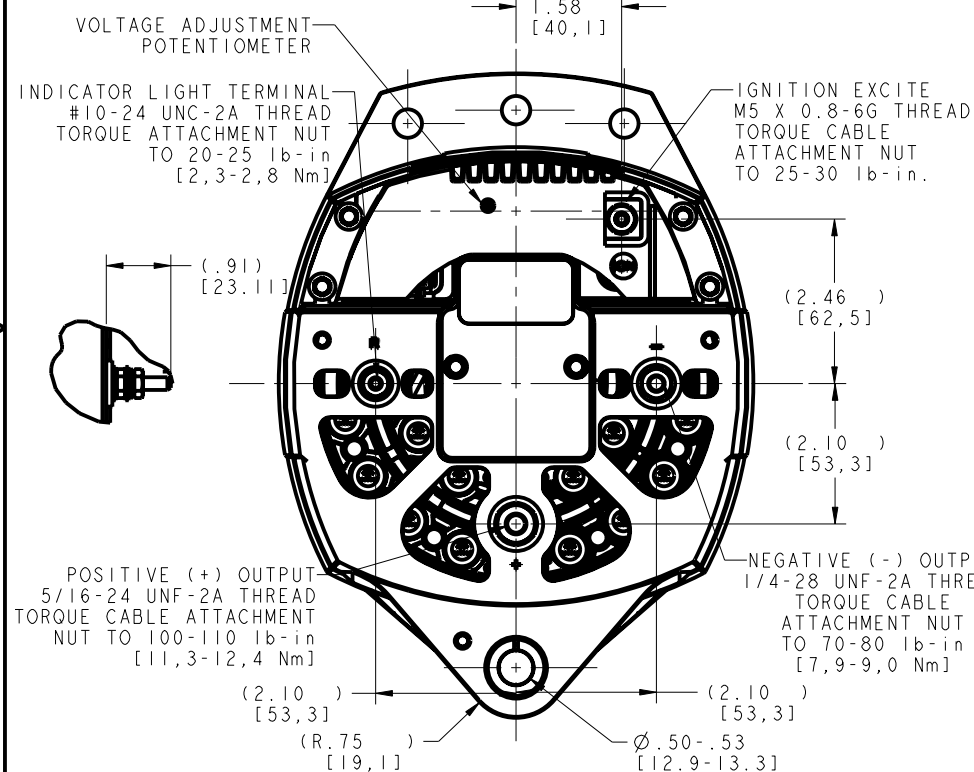
REVISIONS		DATE	APPROVED
ZONE	REV	DESCRIPTION	
A		RELEASED FOR PRODUCTION	JFH 10/20/09
			MJB ECN 59621

- NOTES:
- REFER TO SPECIFICATION 5471063A01 FOR LABEL AND PRINTING INFORMATION.
 - OUTPUT TERMINALS ARE ELECTRICALLY ISOLATED FROM ALTERNATOR CASE.
 - ADJUSTABLE VOLTAGE REGULATOR FACTORY SET AT 28.0 ±0.2V VOLTAGE ADJUSTMENT THROUGH NON-STOP POTENTIOMETER VOLTAGE ADJUSTMENT RANGE: 26.8V MAX TO 29.5V MIN. FLAT TEMPERATURE COMPENSATED: 0mV/°C TYP.
 - AMBIENT TEMPERATURE: OPERATING: -40°C TO 110°C NON-OPERATING: -55°C TO 110°C
 - MAXIMUM CONTINUOUS SPEED IS NOT TO EXCEED 6,000 RPM.
 - MAXIMUM INTERMITTENT SPEED IS NOT TO EXCEED 8,000 RPM.
 - THE PULLEY DIAMETER IS DEPENDANT ON THE INSTALLATION, PULLEYS MAY BE OBTAINED FROM LEECE-NEVILLE HEAVY DUTY SYSTEMS.
 - PULLEY NUT TO BE TIGHTENED TO 70-80 lb-ft. TORQUE WHEN PULLEY IS INSTALLED, 20-25 lb-ft WHEN SHIPPING TUBE IS INSTALLED.
 - PAPER TUBE IS INSTALLED FOR PROTECTION OF SHAFT DURING SHIPPING. CUSTOMER SHOULD REMOVE AND DISCARD BEFORE PULLEY INSTALLATION.
 - ALTERNATOR MUST ROTATE IN A CLOCKWISE DIRECTION WHEN VIEWED FROM FAN SIDE OF UNIT.
 - PERFORMANCE CURVES: OUTPUT: C-3578-1 HORSEPOWER & TORQUE: C-3578-2
 - 8mm HEX DRIVER MUST BE FULLY INSERTED DURING INSTALATION OF THE NUT TO PREVENT SHAFT DAMAGE.



TIGHTEN PULLEY NUT TO 70-80 lb-ft [95-108 Nm] SEE NOTE 12

3x 1/2-13 UNC-2B THREAD TORQUE MOUNTING HARDWARE TO 50-55 lb-ft [68-74 Nm]



UNCONTROLLED COPY

WIRING DIAGRAMS

THIS PRINT IS THE PROPERTY OF PRESTOLITE AND SUPERSEDES ALL PREVIOUS REVISIONS. INTERPRET DRAWING ACCORDING TO ANSI Y14.5M-1982. DO NOT SCALE - WORK TO DIMENSIONS. UNLESS OTHERWISE SPECIFIED, DIMENSIONAL TOLERANCES ARE: X ±0.1, .XX ±0.01, .XXX ±0.005, ANGLES ±0.5°.

NOTICE -- PRESTOLITE CLAIMS PROPRIETARY RIGHTS IN THE INFORMATION DISCLOSED ON THIS DRAWING. IT IS ISSUED IN CONFIDENCE FOR ENGINEERING INFORMATION ONLY AND MAY NOT BE USED, IN WHOLE OR IN PART, TO MANUFACTURE ANYTHING, WHETHER OR NOT SHOWN HEREON. REPRODUCED OR DISCLOSED TO ANYONE WITHOUT DIRECT WRITTEN PERMISSION FROM PRESTOLITE.

8SC3160V	24	150	8RL3136	85A
MODEL	VOLTS	AMPS	REGULATOR	FORMAT
JFH	10/23/08	Leece-Neville HEAVY DUTY SYSTEMS		
MJB	06/16/09	PRESTOLITE ELECTRIC, INC. 400 MAIN STREET ARCADE, N.Y. 14009		
MJB	10/20/09	OUTLINE, ALTERNATOR 24V 150A		
ECN 59621	D OEDY1	DWG NO	8SC3160V	
EPN 905051	SCALE 3:4	SHEET 1 OF 2		